

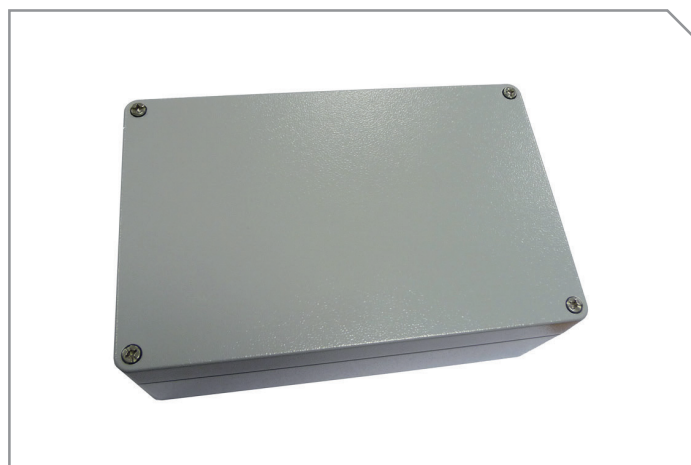
SOUND POWERED TELEPHONE SYSTEMS

DISTRIBUTION BOX

TYPE: SCM-CD

MODEL: CX-10

SCM
SISTEMAS



FEATURES

- Distribution box.
- 10 circuits.
- Enclosure: aluminium.
- Painted according to military specifications.

TECHNICAL SPECIFICATIONS

Assembly	Bulkhead
Weight	Approx 3.8 kg
IP-rating	65

